



# The Pinewoods Post

◆ SPRING 2020 ◆

## Dear Pinewoods Community

*By Carl Mastandrea*

It is with sadness that Pinewoods Camp, along with our five program providers -- Country Dance & Song Society, Country Dance Society-Boston Centre, Royal Scottish Country Dance Society, Folk Arts Center of New England, and the Folk Music Society of New York -- announce the cancellation of the 2020 summer season. Your health and well-being are of the utmost concern to us, and it is with that in mind that we all feel that it is safer to wait until next year to resume dancing and singing under the pines.

After careful deliberations by our entire board, and looking at various scenarios including postponing the opening date, we have decided that the safest scenario is to close Camp for the season. Camp takes at least two weeks to open, and so any date we thought might be safe to open would need to be preceded by getting crew here two weeks earlier -- when it wouldn't be safe. In addition, the fact that our pastime is social dancing, which involves touching hands with everyone in the room, is a recipe for disaster. There are also economic considerations to consider, as even the partial opening of Camp requires a significant investment, with the looming possibility that we would have to close a short time later if we experienced any outbreak.

It is therefore time, dear Campers, to sit this dance out and come back stronger than ever in 2021. ◆

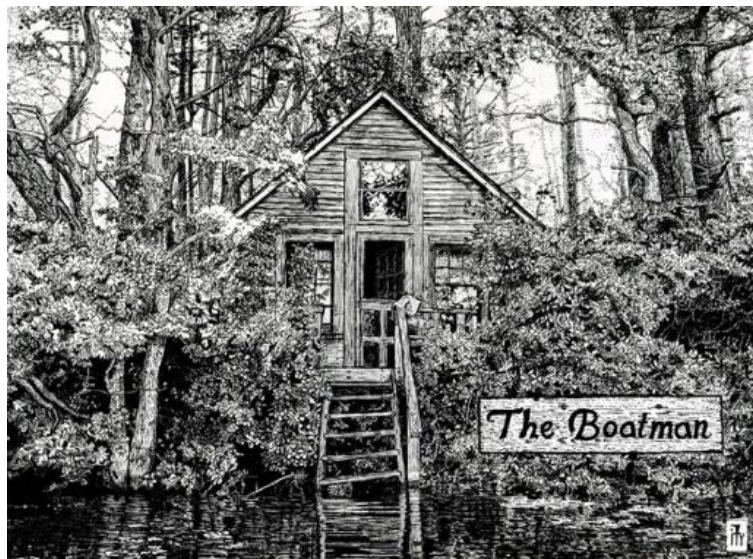
Be safe, my friends.  
Carl Mastandrea



*Photo by Carl Mastandrea*

## Pinewoods, Artistic Muse

*By Sue Rosen*



*The Boatman by Jeremy Thorpe*

Camp has long served as an inspiration for dance choreography, but it has also served as muse for other forms of art. A quick peek at the Pinewoods Facebook page and the Pinewoods Post delights us with Carl Mastandrea's photographic gems taken throughout the year. What we rarely see are the works that emerge during any particular camp session, so we thought we'd share a few of them here.

Jeremy Thorpe's favorite cabin, Boatman, served as the inspiration for this drawing that he made, working from a photo that he took from Round Pond in 2019. Jeremy writes, "Round

*Continued on page 2*

## In This Issue

- ◆ *Dear Pinewoods Community*
- ◆ *Pinewoods, Artistic Muse*
- ◆ *Notes from the Executive Director*
- ◆ *News from the Board: Meet the New President*

## Program Providers

### **Boston Branch, Royal Scottish Country Dance Society**

c/o Folk Arts Center  
10 Franklin St., Stoneham, MA 02180-1862  
www.rscdsboston.org

### **Country Dance Society, Boston Centre**

P.O. Box 3055, Acton, MA 01720  
781.591.2372 • www.cds-boston.org

### **Country Dance & Song Society**

116 Pleasant Street, Suite 345  
Easthampton, MA 01027-2759  
Steve Howe • Director of Camp Programs • camp@cdss.org  
413.203.5467 • www.cdss.org

### **Folk Arts Center of New England**

10 Franklin St., Stoneham, MA 02180-1862  
Marcie Van Cleave • Executive Director • fac@facone.org  
781.438.4387 • www.facone.org

### **Pinewoods Post**

Sue Rosen • Editor • suerosen\_caller@yahoo.com  
Carl Mastandrea • Executive Director •  
manager@pinewoods.org  
Kim Becker • Design & Layout  
Anne Ketchen & Jan Elliott • Proofreaders

## Check Our Website

For news updates, additional information,  
photos, and past issues of the Post, log on to our website:  
www.pinewoods.org, or join us on our  
"Pinewoods Camp" Facebook page.

## Note:

This issue of the Pinewoods Post is being sent out via  
email to most of our readers, as will all future editions.  
However, paper copies will continue to be mailed to  
those who have requested their issues in hard copy.  
To request a paper copy, email manager@pinewoods.org  
or call 508-224-4858.



Photo by Hannah Lindner-Finlay



Photo by Nikki Herbst

## Pinewoods, Artistic Muse

*Continued from page 1*

Pond is a point of serenity for me, somewhere I feel at peace whether I'm there or just thinking about being there, and I tried to capture that in my drawing. Often there's nobody else there, and I can be alone with the big bass brooding under the surface, the painted turtles sunning themselves on half-submerged logs, the catbirds and red squirrels scolding me from overhead. When I wake up in Boatman, the stairs down to the water are right outside my door, so I can refresh myself with a dip without worrying about being late to lunch. (I'm told they serve breakfast at Pinewoods, but as far as I can tell that's just a myth.) At night the bullfrogs' croaks and the green frogs' banjo plucks sing me to sleep. For this drawing I used Pigma Micron pens on Bristol board; I tried to emulate the hand-painted Pinewoods cabin font for the label (and squinted at a lot of reference photos to that end!). Most of my time was spent drawing foliage, which I tried to make accurate enough for species identification, but it was a lot of fun really looking at all the little parts of Boatman and how they fit together."



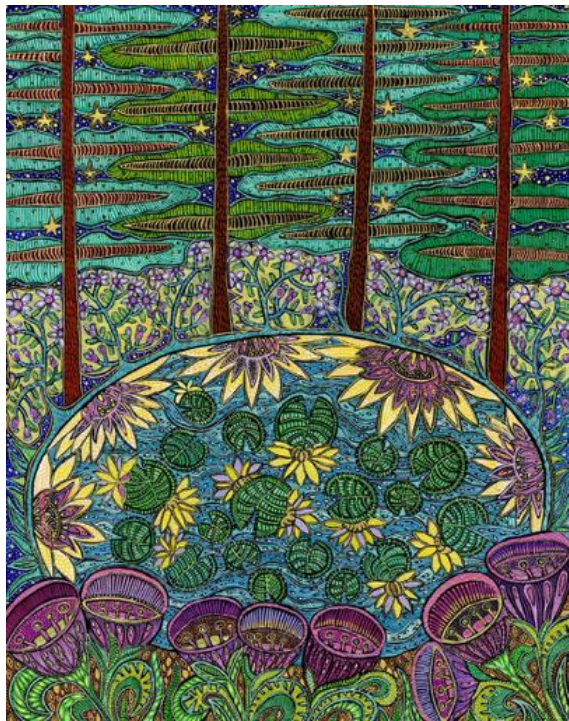
*Rest & Be Thankful  
by Barbara Pixton*

Barbara Pixton created this picture of Rest & Be Thankful some years ago in a graphic travel poster style with a title and border. Barbara writes, "Tom and I stayed in that cabin for many years; it's a very quiet, private spot in the camp. We recently moved next door to Petronella (still quiet and private, but the floor is a little more level!). The drawing was made in Adobe Illustrator using a mouse. I never quite finished it until Marcie Van Cleave asked me if I had an illustration suitable for a Folk Arts Center Pinewoods postcard. After it was used for that purpose I put it up on my Etsy site as a print and a greeting card. People didn't seem to care for the title and border on the print so I took them out."

*Continued on page 3*



Another lover of Round Pond, Ann Percival paints every day when she is at Pinewoods. Ann works with acrylic gouache and small brushes, and says, "I am a process painter, which means that I paint what I feel, and I follow my brush. Sometimes I end up with a painting that reflects my surroundings. Like this one! I love Round Pond and always try to stay in a 'Round Pond cabin.' Recently I have been enjoying the upstairs of Pinecones very much. And yes, I always take an early morning and after-the-dance swim."



*Round Pond*  
by Ann Percival

When Sam van Loon came to Pinewoods for the first time a few years ago, he was reminded of a song, the "Owasippe Hymn," that he learned at a Scout camp he had attended. Sam recalls, "At the end of the opening and closing campfires, the whole camp sings a song about the features of camp and

Chorus:

O Pinewoods, O Pinewoods  
May you live so long  
That each and every one  
Won't forget your joyful song.

Verse:

With your ponds Round and Long  
And your love of dance and song  
Your trees, strong and tall, bring us joy.

Chorus

Verse:

As we walk on your paths,  
Beds of leaves and beds of sand  
We sing this song to soothe our aching soles.

Chorus

*Lyrics by Sam van Loon*



the spirit of our being there. I wanted to create something similar for Pinewoods; it is such a special place for all of us, and my hope was to write a tune people could sing together and remember all their fond times at camp. It brought me such joy when Julie Metcalf told me this past summer that she still knew the song and had the lyrics. I hope others will also enjoy the song and allow it to take them back to their favorite places around Pinewoods for a few moments when it crosses their mind."

Finally, forgotten in the mists of time but celebrated year-round, is our cherished logo. Frank Edwards, creator of the trees and scrawled script, says, "I think it was more 'a lack of' rather than inspiration (aka 'desperation'). Not sure how my hand got raised -- it might have been Genny Shimer batting her eyelids at me. We were in the middle of putting together the first Pinewoods Post and CDSS T-shirts, if memory serves.

"Fond memories of walking through the pine forest at dance weekends at Green Camp in New Jersey, and then coming to Pinewoods, provided the kernel. Fortunately the scrubbiness of the trees at Pinewoods excused my ragged penmanship. Not what I would call 'art' and we issued it with trepidation, so I believe the fact that it sold is more a great testament to the incredible loyalty of campers and their desire to support the fledgling PCI, than art." ◆

## News from the Board: Meet the New President

*By Martin Barbour*

One of my favorite places to sit is on the edge of a pond at Pinewoods. Whether Long Pond or Round Pond, where else can you go to be alone in your thoughts, laugh and converse with others, listen to music, reenergize and cool down before the next dance, or share a space in nature with a bald eagle or a chorus of frogs? I am privileged to be able to immerse myself in the magic of Pinewoods, as a camper, volunteer, board member, and now as president of the PCI board. The organization has fostered traditional music and dance for almost one hundred years, while also striving to be good ecological stewards through sustainable approaches to the camp facilities and operations -- the design of the facilities, maintenance of the forest health, and a focus on healthful meals prepared from scratch in our kitchen.

Pinewoods is a place for my whole family. My parents have been actively attending Camp since the mid-1970s, and my daughters have been campers, volunteers, and camp crew as well. My wife Nancy and I enjoy the opportunities when we can be at Pinewoods with three generations of Barbours! I grew up on Cape Cod, and currently live just outside of Princeton, NJ,

home of the Princeton Country Dancers. For many years I have been a member of different ritual dance teams, currently active with Handsome Molly and Griggstown Lock Rapper.

As I take on the role of board president, I would like to thank Warren Anderson for his service to PCI as board president. He has done an outstanding job ensuring the continuity of the camp experience and setting the stage for Pinewoods to continue to adapt to meet the needs of our campers while maintaining a sense of tradition. I look forward to working with Warren over the coming year as he completes his term of service as a board member.

I was hoping to see many of you at Pinewoods this summer -- our special place to dance, sing, and play... together. With the challenges that the world is currently facing, this summer will prove to be very different from what all of us were expecting. I wish for good health for our entire extended dance and music community, and look forward to the time when we can get together at camp, meet new friends, share a meal, and enjoy a dance together. ◆



# News from the Executive Director

By Carl Mastandrea

As soon as the season ends, we embark on our pre-planned off-season projects, both big and small. This year, we particularly wanted to get stage two of the forest management project done, but we also had a half dozen building-related projects, as well as the regular maintenance and upkeep that we do every year. We dodge the weather and complete what we can between the cold or the snow. This was an unusually mild winter (lost electricity only twice) so we got the jump on some of the projects early. Here's what we've done so far.

**The roofing project** -- Thirteen roofs were scheduled to be reshingled this year. The cabins included Bampton 2-5, Fieldtown 2-5, Longborough 1-3, Kitty Alone, Loftus, Twin Sisters, and Sleights. All are done and came in under budget. By doing them in groups, we get a good discount, but it still costs \$23,000.

**Headington bathroom project** -- We removed the rickety existing skylight and replaced it with two manually operated venting skylights, and installed a new roof.



Fieldtown 2

Photo by Carl Mastandrea

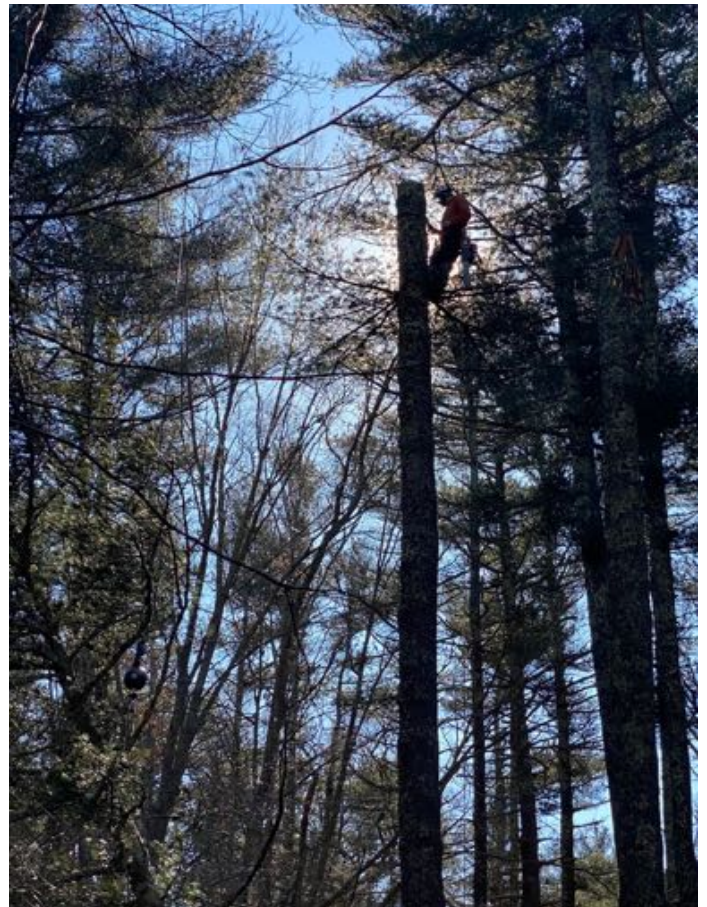


Headington Bathroom

Photo by Carl Mastandrea

**Cornrigs extension** -- We plan to build an extension on Cornrigs, the crew cabin that houses mainly male volunteers in the summer. The extension will be a separate room with space for two, which will give me more flexibility housing volunteers. Here's the process we had to go through to make this happen. First, I got board approval for the idea. Then I worked with Brad Holmes of Environmental Consulting, also known as Blueberry Brad, our neighbor, on a NOI (notice of intent) for the Town of Plymouth. Cornrigs is close to Long Pond so we need to make sure we have the proper permission from the Conservation Committee. We had a hearing on January 7 and got their approval (that we don't need to do a full application). An architect, Mackenzie Glennon, has produced the drawings that are needed in each step of the way. Lucas Nichols, who rebuilt the Camp Store, will apply for a building permit, and construction will be done by the beginning of the season.

**Forest management, Stage 2** -- In this stage, we identified sixty trees that either had insect damage, stress fractures, were hollow, or were clearly in distress. Taking down these trees takes a fair amount of planning with our tree guy, John Scag. A lot of the work is actually technical: When do we need a crane? Which trees, if any, can be topped and taken down in pieces? Which are accessible with machinery? Then we need to decide how much we will mill and how much will be taken off-site. I am much more confident that we have a healthier forest now. Forest management challenges remain and this work will continue.



Tree Work

Photo by Carl Mastandrea



## News from the Executive Director (cont.)



*Scag Tree*

*Photo by Carl Mastandrea*

**Overall maintenance** -- We continue to work on projects both big and small. Here are some highlights.

Railings and more railings. By spring every staircase with two or more steps should have a railing. New ones include the stairs to C# next to my office, and on the stairs behind the Camp Store.

Emergency lights were installed at C#. After last year's heart attack incident, we realized we needed emergency light on the outside of C# so folks can get out of there quickly, if need be.



*Photo by Carl Mastandrea*

We are replacing all the bad curtain rods in Camp, which actually might be all of them. This will make life easier for the crew and more pleasant for Campers. Here's the new design. The use of copper tubing was our cheapest option.

We continue to work on the window project, which has morphed into the screen project. Many of the screens on windows in Camp were past their useful life so we have been replacing them one by one. We have gone through four hundred feet of screening so far.

The kitchen at Cottey House is getting a bit of an upgrade. The sink and cabinets were falling apart, and the floor had many holes in it. We got a donation last year to do this.

A new landing for the Bookstore, repaired decking on the program providers' porch, and adding outlets to Grenoside's porch so the scooter folks can easily plug in their scooters, are among the many smaller projects we've completed.

**Annual Appeal** -- Once again, I want to thank everyone who gave to this year's very successful Annual Appeal. We topped the \$100,000 mark with literally hundreds of donations both big and small -- and the help of a generous (anonymous) matching grant. It is clear how much you all love Pinewoods and your generosity allows us to continue to maintain and improve this Eden in the woods.◆



*Photo by Fred Gerhard*



*Photo by David Conant*



*Photo by David Conant*